

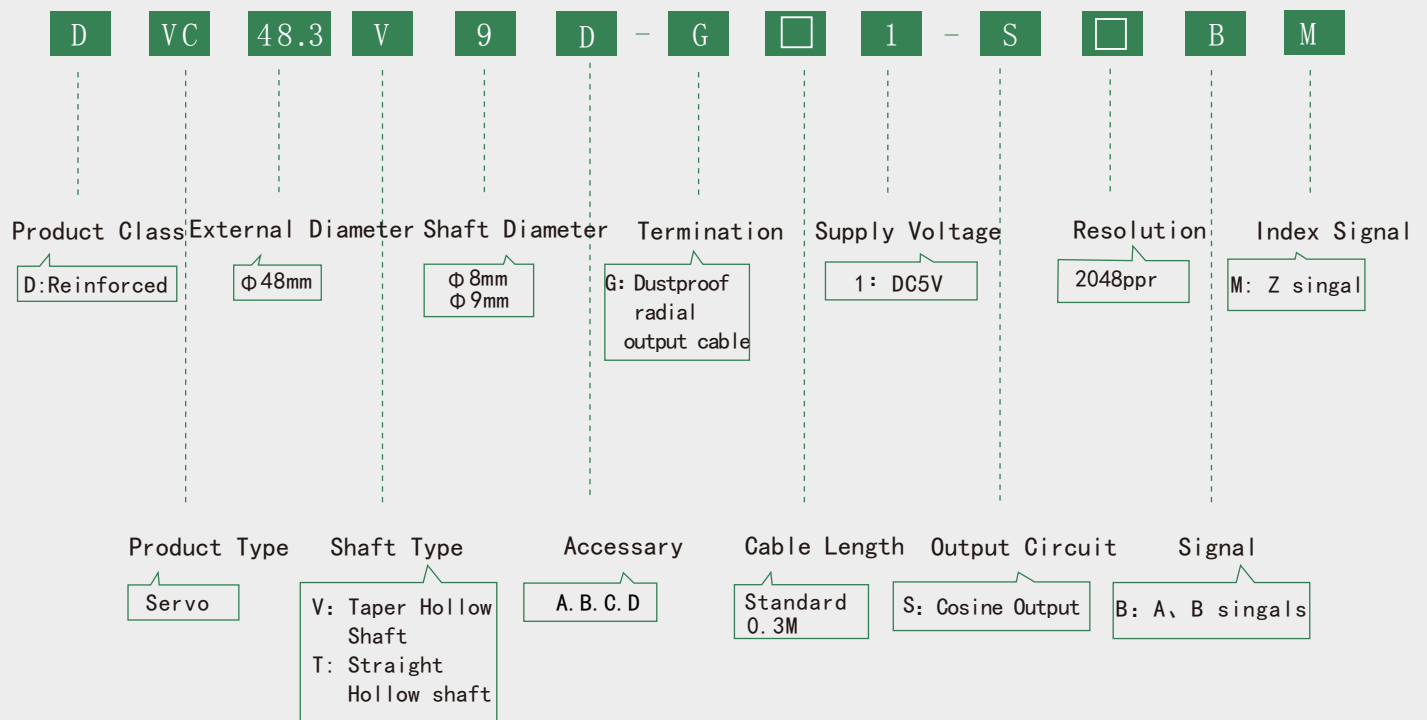
# 产品选型手册

Product selection guide



DVC48.3 • Series

## Part Number



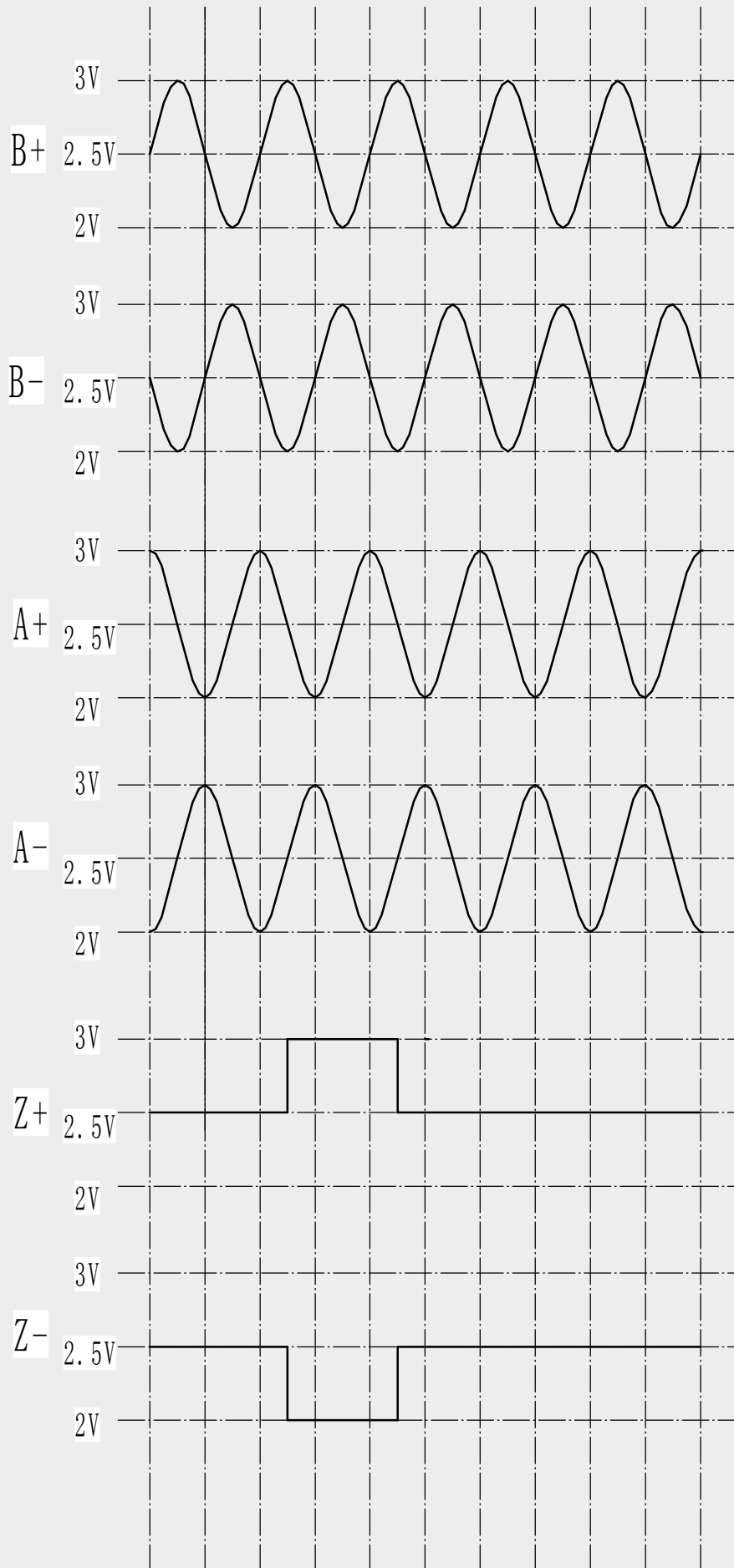
## Electrical Parameter

Output Type	Supply Voltage DC (V)	Consumption Current (mA)	Output Voltage (V)		Rise Time (ns)	Fall Time (ns)	Response frequency (kHz)	Insulation resistance (kHz)
			$V_E$	$V_L$				
Line Driver	$5V \pm 0.25$	$\leq 60$	$>= 2.5$	$<= 0.5$	$<= 200$	$<= 200$	300	$>= 100$

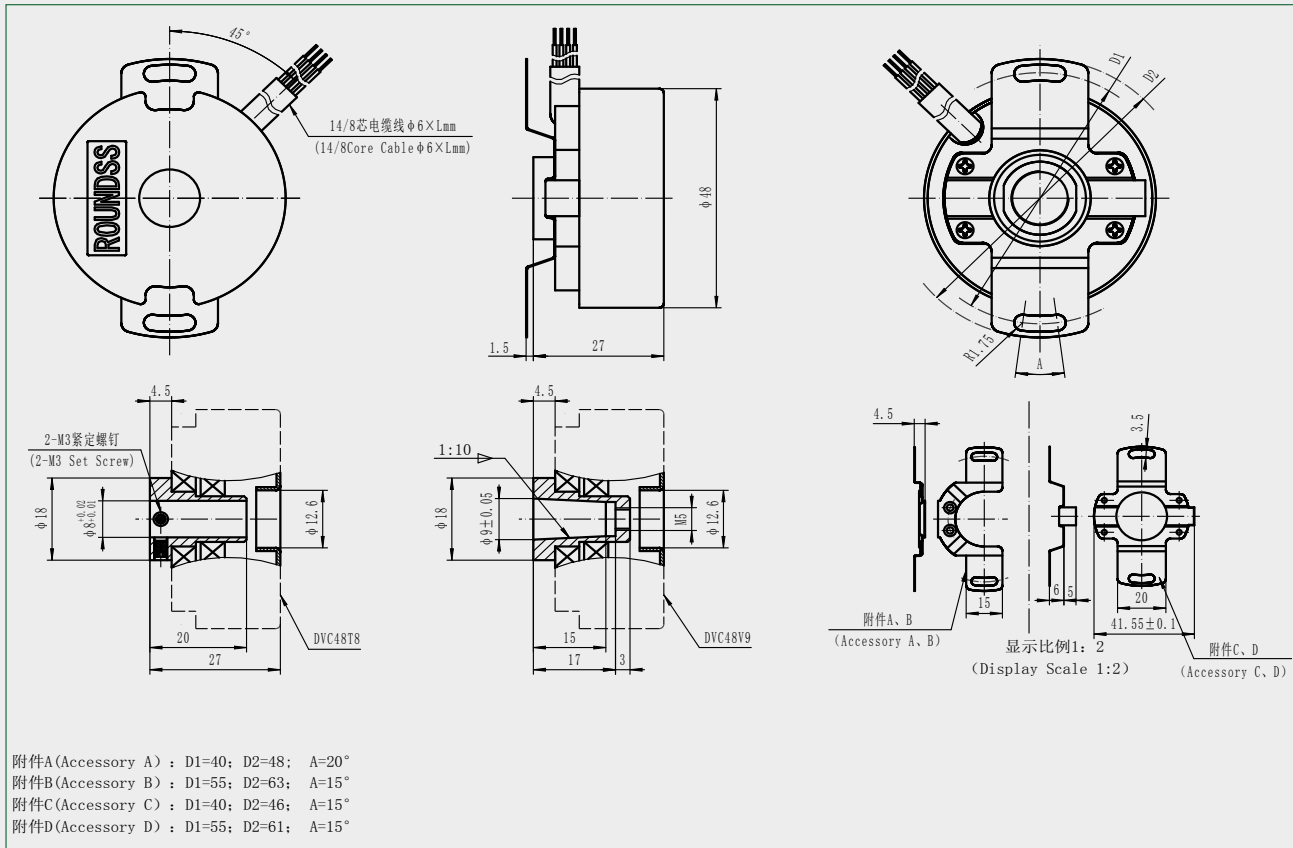
## Mechanical Parameter

Max Speed (rpm)	Start Torque (25°C) (N·cm)	Allow angular acceleration (rad/s <sup>2</sup> )	Max Load (N)				Moment of Inertia (kgm <sup>2</sup> )	Weight (kg)
			Static		Dynamic			
			Radial	Axial	Radial	Axial		
Line Driver	$5V \pm 0.25$	$\leq 60$	10	10	10	10	$1 \cdot 10^{-6}$	0.3 without cable

# Output Phase Shift



# Dimension



# Connection

Color	Red	Black	White	Gray	Green	Brown	Yellow	Orange	Shield
Signal	Vcc	0V	A	$\bar{A}$	B	$\bar{B}$	Z	$\bar{Z}$	G

China Rongde Optics Co., Ltd

[www.roundssencoder.com](http://www.roundssencoder.com)

